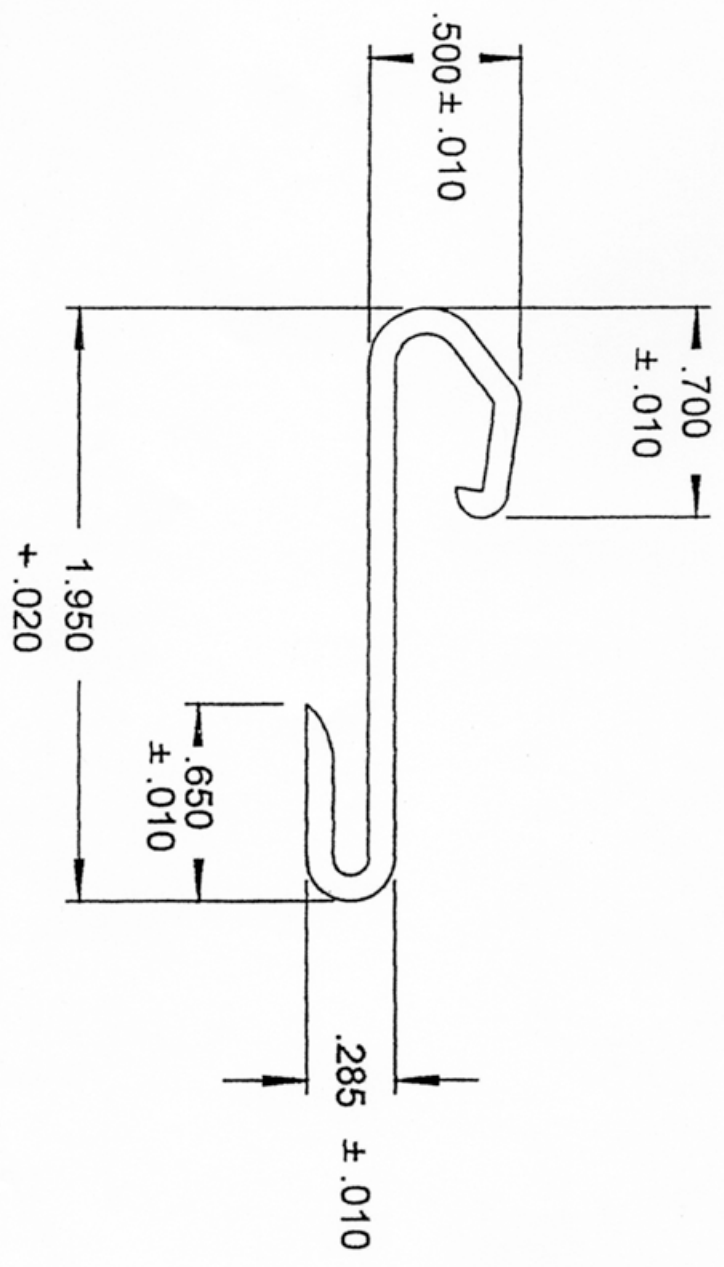
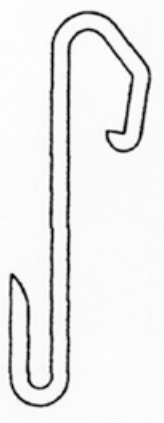


Production Print  
Visible section finish critical

Read instructions on set-up sheet  
Keep part as close to nominal dim. as possible

Date  
3/25/99

FWLER DN.  
3529



Material:

HI-100 U ABS

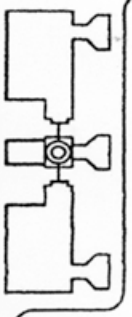
Color:

White

Length Cut:

53 ln. ± 1/8 ln.

56 ln. ± 1/8 ln.



810 Colby Road  
Crestline, Ohio 44827  
Phone: 800-877-1817  
Fax: 419-683-3620  
www.fowler-inc.com

NO.	Revisions	Date
0	Initial Release	8/6/29

Customer	Fowler Products Inc.
Part Name	Bead Receiver #3
Customer PN	
Customer Dwg. No.	
Cad Program	29516P
Rev.	0

